



NYU | WASHINGTON, DC

Women and Migration(s): Crisis

June 10, 2020



Join NYU Washington, DC in welcoming NYU Tisch's Deb Willis and Ellyn Toscano with Cheryl Finley of Spelman's AUC Art Collective for this special DC Dialogues program on Women and Migration(s) webinar. This event is also sponsored by NYU's Office of Global Inclusion, Diversity, & Strategic Innovation. Women have been part of global and historical movements of people, to escape war, to avoid persecution, for work, for security. Women have been uprooted, stolen, trafficked, enslaved; they have been displaced from land despoiled of resources and habitats lost to extreme weather

patterns and climate change. Now, in the midst of a global pandemic, displaced women can neither stay put nor return to the places from which they have fled; women are unequally in low-paid, high-risk, insecure “essential” employment, on the front lines of crisis; women are subjected to increasing violence, in domestic situations or the temporary and communal living arrangements in which women and girls in migratory situations are sheltered.

In a four part series, we will explore the importance of photography, art, film, history, law, policy and writing in identifying and remembering these migratory experiences. The public policy lens through which the current crisis is analyzed is one vantage point, an essential one to be sure. The contribution of artists and writers help us to explore the lived experiences of home and loss, family and belonging, isolation, borders and identity - issues salient both in experiences of migration and in the epochal times in which we find ourselves today.

We begin on June 3 with a general discussion of the issues of women and migrations, through a multiplicity of disciplinary perspectives. On June 10, we look at the context of crises - COVID and otherwise. On June 17, we examine the experience of women and migrations through memoir and on June 24, through art. The wide interdisciplinary lens will broaden the conversation and deepen understanding, opening the space of reflection and commitment.

June 10 - Crisis



Jennifer Clement



Lisa Coleman



Patricia Cronin



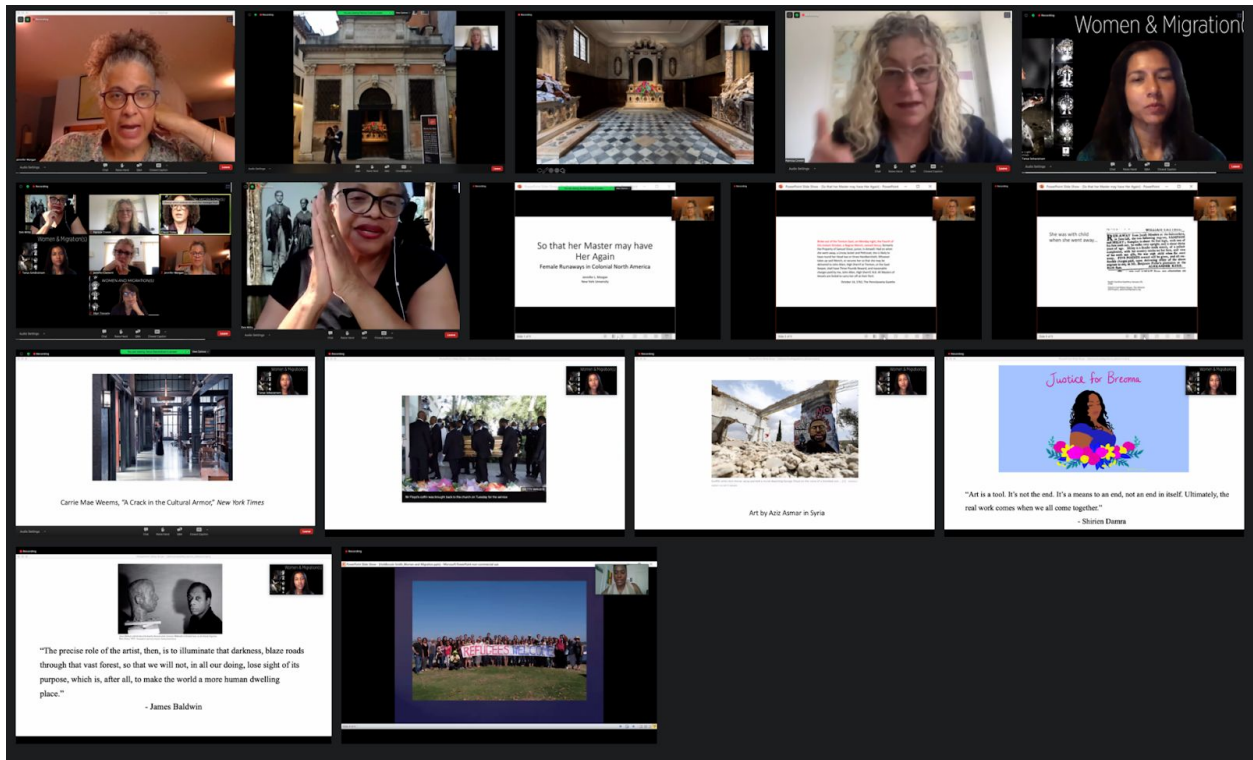
Arielsela Holdbrook-Smith



Jennifer L. Morgan



Tanya Selvaratnam



Find this article in: <https://nyuwashingtondc.smugmug.com/6102020-Women-and-Migrations-Crisis/>